



GREETINGS PARTNER IN ACTION,

From Guadalajara, Mexico to Namwala, Zambia and beyond, we have seen the Lord's hand of protection over our project partners. It is amazing to witness all the new ways we have been able to care for people through this challenging season.

Thank you for making it all possible through your generosity.

JOSHUA WARD

Executive Director
Partners in Action

PARTNERS IN ACTION QUARTERLY UPDATE

TABLE OF CONTENTS

Essential Oils in Bulembu • P.2

Farming in Zambia • P.2 - 3

Transition in Nigeria • P. 3

Exams in Uganda • P.4

Water in Mexico • P.4

Growing Partners • P.5

Office Move • P.5

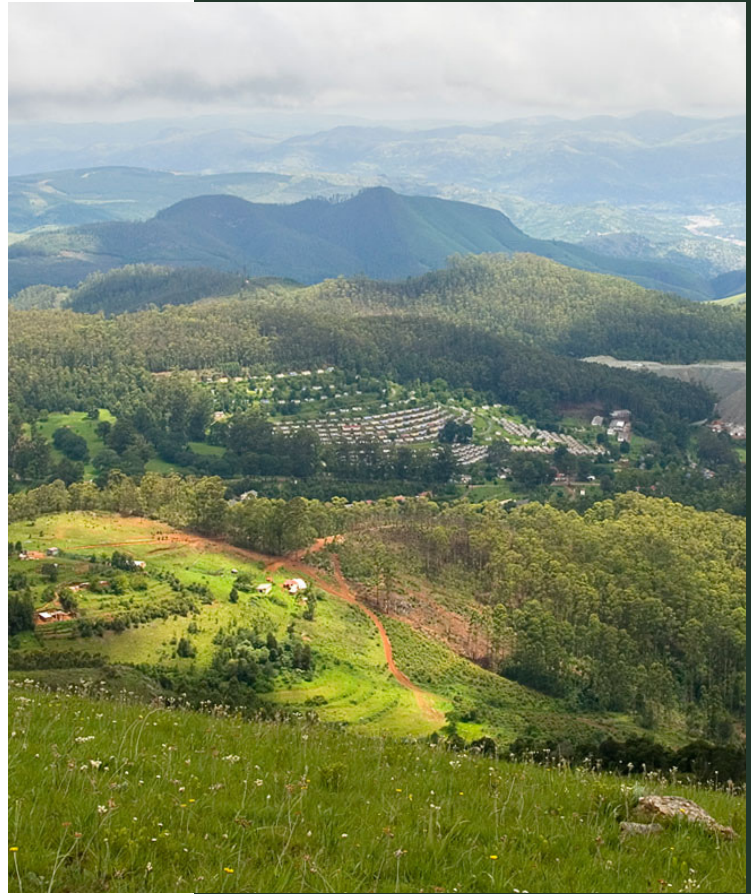
THE LONG ROAD TO SELF-SUSTAINABILITY

The **Bulembu** team are hard at work, transforming 2,300 acres of timber surrounding the town, into an essential oils plantation.

We are in the beginning stages of a 9-year project that has the potential to provide 50-70% of Bulembu's entire operating budget. This is a huge step forward in our mission to become a self-sustaining town. There is still a long road ahead, but the path to self-sustainability has never been more clear.

Over 170 acres of essential oil crops have already been planted, and another 500 acres will be planted over the next year.

Some of the Bulembu graduates have already taken a position in this start-up company.



THE HARVEST IS ON ITS WAY IN ZAMBIA

This month our farmers will begin harvesting their biggest yield of cowpeas yet. After many farmers were hesitant to plant anything other than maize, our farmers planted a majority of their fields with cowpeas. This has proven to be a valuable decision as much flooding in the area has killed off the sensitive maize crop. Thankfully, cowpeas seem to be a lot more versatile.

CENTRAL TO THE GROWING SUCCESS OF THE POVERTY LAB, IS THE MODEL FARMERS OF NAMWALA, ZAMBIA.

The farmers were given an assortment of cowpeas, ground nuts and maize to test the optimal growing conditions for each crop. This begins a new season of diverse crop harvests in Namwala.

Here you see the farmers harvesting their first crop of ground nuts (peanuts).

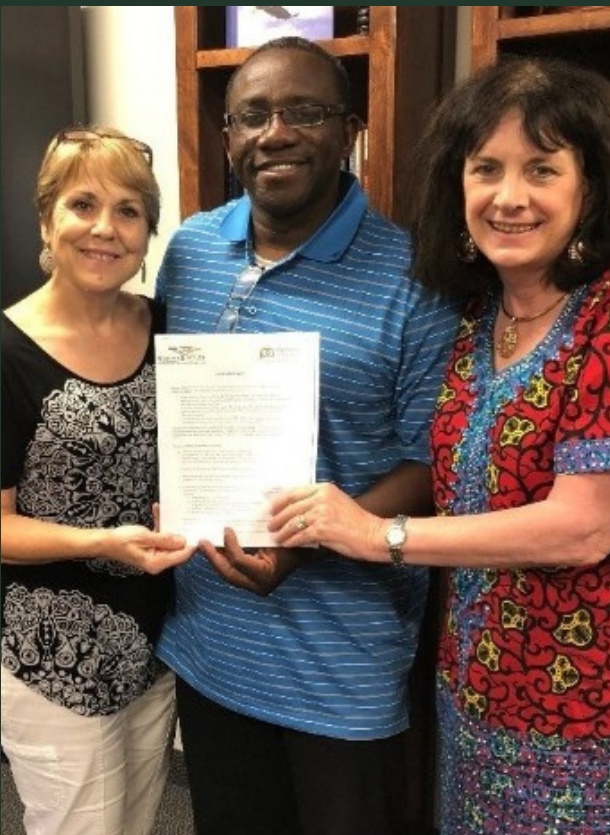
ZAMBIA: GROWING THE VISION

Meet Wafuka Kapolesa, the latest addition to our team. Wafuka joins Partners in Action as the Poverty Lab Country Manager for Zambia.

For almost a decade, Wafuka and his wife, Lily, worked with us in Eswatini. In 2011, they returned to Zambia with a mission to bring the Challenge Ministries Swaziland model of community development and discipleship to his home country.

Today, they lead a rural church plant, a local kindergarten, a community health and development site, and numerous sustainability projects; cumulatively known as an ICBC site (In the Community, By the Community). In addition, they run a Teen Challenge men's rehabilitation center.

Wafuka is leading the charge, as we partner the ICBC vision of community transformation with The Poverty Lab's mission of large-scale poverty alleviation.



PUSHING THE MISSION FORWARD IN SAPELE, NIGERIA

We are excited to announce the handover of our beloved Community Center in Sapele, Nigeria.

After working in partnership with **Mission Africa** for the last 3 years, we are excited to empower their mission and vision for the area, by transitioning the project to their full oversight and ownership. Their cultural understanding and direct line-of-sight will carry the good work forward, taking the project to new heights.

We pray that God blesses them as they carry the project forward.

PREPARING FOR EXAMS IN UGANDA

Meet Ezra, the director of Suubi Child Development Center (CDC) in Uganda. For many years now, PIA has walked alongside Ezra, as he lives out a mission to provide education and safety for the orphaned and vulnerable children of Mukono, Uganda.

At the end of this month both graduating classes of Suubi and Meritah, the two primary schools run by Suubi CDC, will take their final examinations. Usually, these would be taken in December, however, COVID restrictions resulted in a delayed examination schedule.

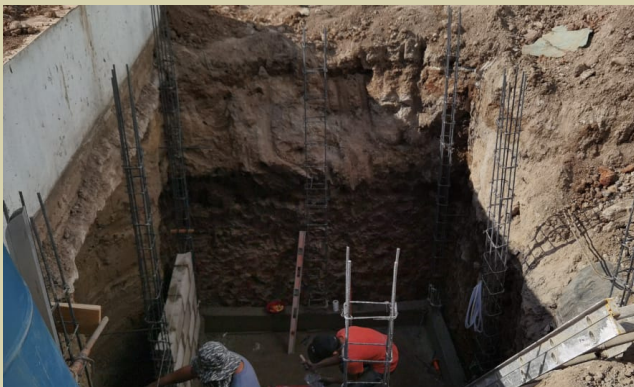
To all PIA-Suubi supporters and sponsors, thank you for your tireless commitment to the children of Mukono Uganda. With schools reopening, we are making it through what will have been Suubi's toughest season yet.



WATER FOR THE CHILDREN IN MEXICO

Hilario and his wife, Melanie, founded Fundación Emmanuel - Guadalajara in 1998 and have run it since. What started out as a simple prison ministry quickly became a thriving family care center that continues to bring light and life to the surrounding communities. After ministering to hundreds of inmates, Hilario recognized that for many of the incarcerated, their biggest need lay outside the walls of the prison - their children; abandoned and vulnerable.

Today, Fundación Emmanuel cares for 80 children, in two locations. This month, thanks to the PIA - Fundación Emmanuel supporters, a local team was able to install a new cistern in the girl's center. This came as a well overdue project, as the previous cistern was dilapidated, and the girls were often left without water when the city ran out.



ESTABLISHING NEW PARTNERS

Since 1995, Partners in Action has held to the core value of helping others start and scale nonprofit ventures. As a nonprofit incubator, we believe we are able to serve thousands more by *empowering others*.

As a result, we have launched PIA Affiliates, a streamlined effort to end suffering, restore human dignity, and point people to Jesus Christ.

Mission Create, another local nonprofit incubator, has merged with PIA Affiliates, in an effort to synergize Kingdom impact.

We look forward to serving new communities through our Affiliate programs.



NEW OFFICE SPACE

We have moved the Partners in Action office to Scottsdale. Thank you to Foods 2000, Inc., for gifting us some office space. This move allows us to cut costs and focus every penny on our projects and partners.

Our new address is:

**15475 N. Greenway Hayden Loop
Suite B21
Scottsdale, AZ 85260**

You can still reach us at: 480-882-0800

